



GAT MONTHLY MEMBERSHIP PROGRESS REPORT

Results as of: 6/30/2023

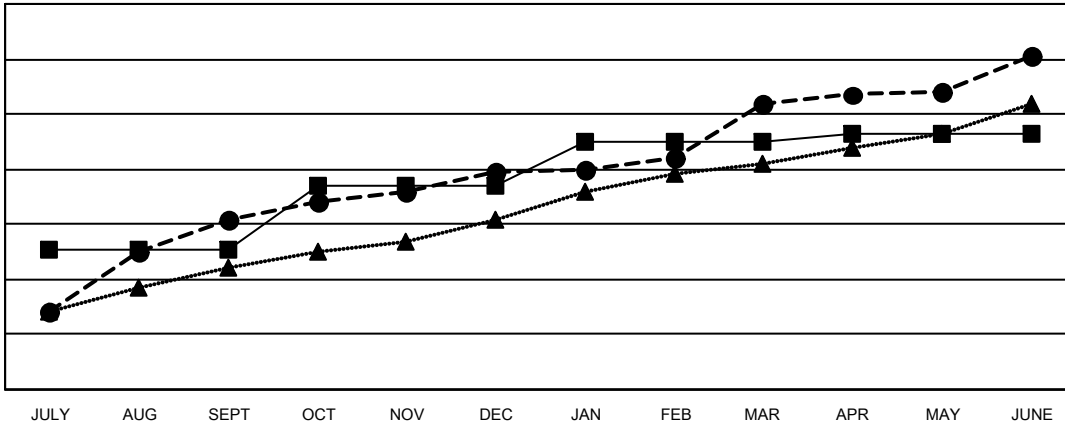
Multiple District 322

LOCATION: INDIA

Clubs			
RESULTS FOR 2022-2023			
QUARTER	NEW CLUB GOAL	NEW CLUBS	DROPPED CLUBS
JULY/AUG/SEPT	51	62	15
OCT/NOV/DEC	23	17	43
JAN/FEB/MAR	16	25	23
APR/MAY/JUNE	3	17	55

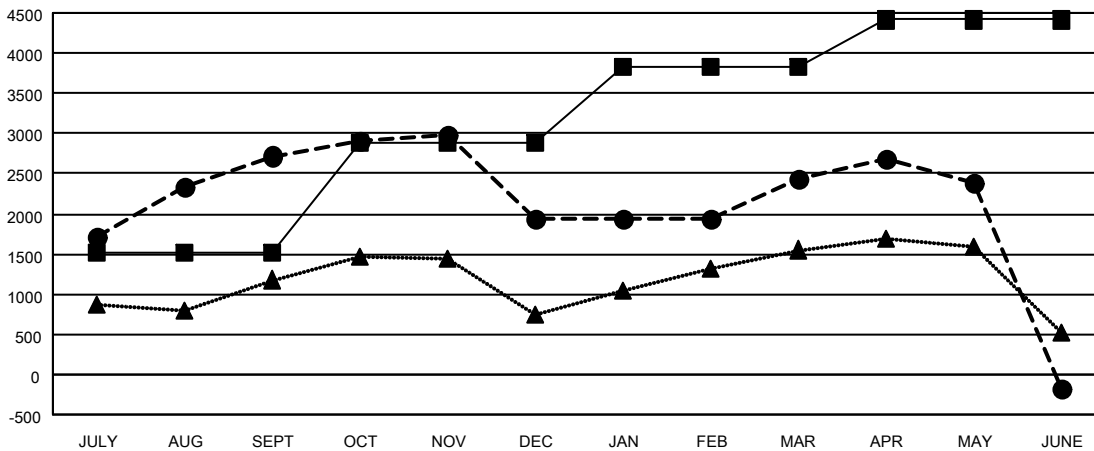
Members			
RESULTS FOR 2022-2023			
QUARTER	MEMBER GROWTH NET GOAL	MEMBER GROWTH ACTUAL	DROPPED MEMBERS ACTUAL (including transfers)
JULY/AUG/SEPT	1523	3,594	731
OCT/NOV/DEC	1363	1,537	2,231
JAN/FEB/MAR	953	1,395	671
APR/MAY/JUNE	575	1,649	4,101

GOALS AND ACTUAL NEW CLUBS CUMULATIVE



- - CURRENT YEAR GOALS FOR NEW CLUBS
- - CURRENT YEAR ACTUAL NEW CLUBS
- ▲ - LAST YEAR ACTUAL NEW CLUBS

GOALS AND ACTUAL MEMBERS CUMULATIVE



- - MEMBER GROWTH NET GOAL
- - MEMBER GROWTH ACTUAL
- ▲ - LAST YEAR MEMBERSHIP ACTUAL

DROPPED CLUBS: 136	789 CLUBS OF 1167 ADDED 1 OR MORE NEW MEMBERS	GENDER DISTRIBUTION
DROPPED MEMBERS	CLICK HERE FOR CUMULATIVE MEMBERSHIP DATA	MALE 25,373 (68.05%)
DECEASED 142		FEMALE 11,905 (31.93%)
CLUB CANCELLED 2,208		NON BINARY 1 (0.00%)
OTHER 5,384		PREFER NOT TO ANSWER 7 (0.02%)
TOTAL 7,734		TOTAL FAMILY UNIT MEMBERS 19,803
		FAMILY MEMBERS PAYING HALF DUES 12,090